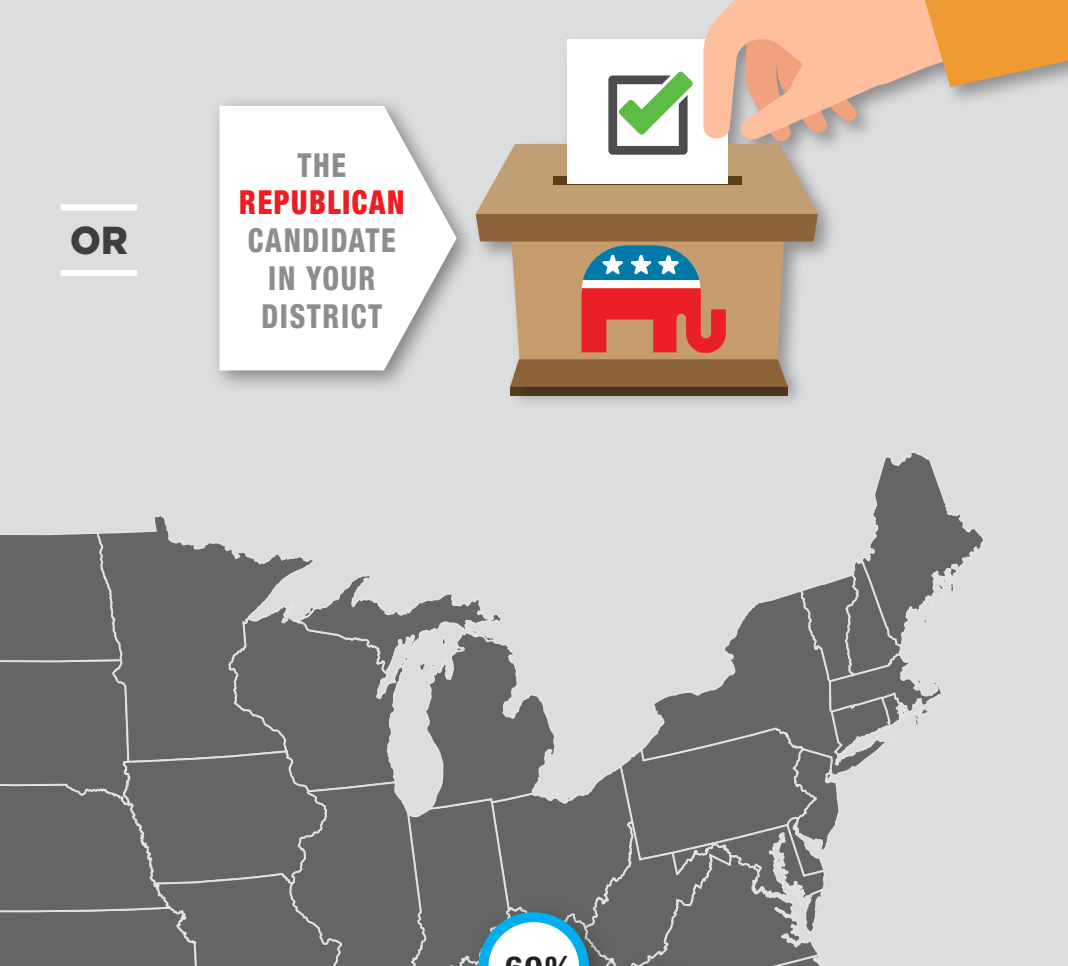
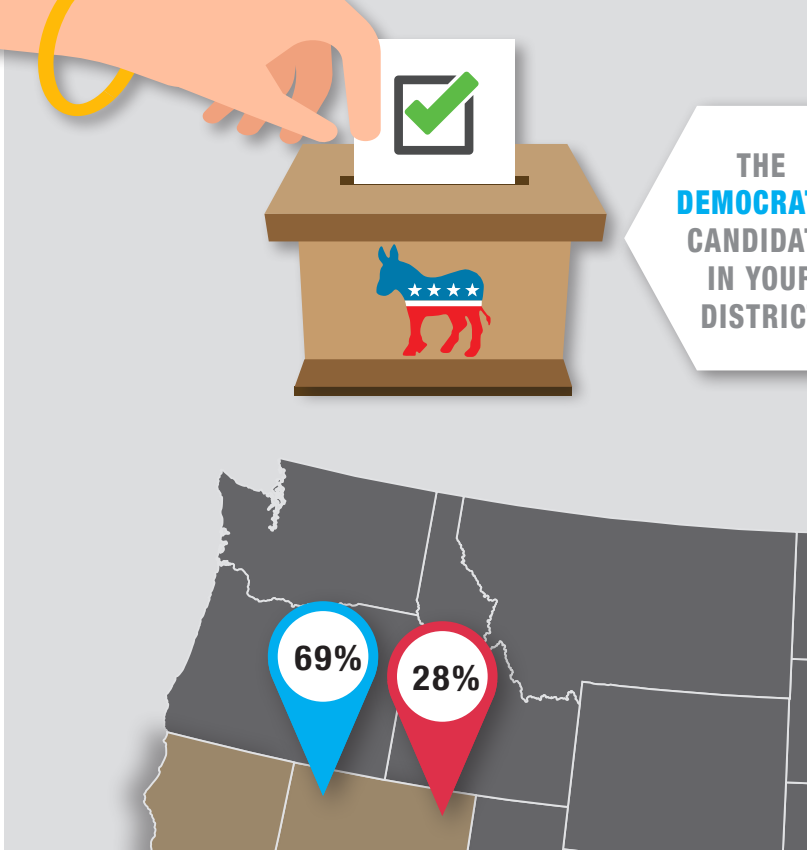


ASIAN AMERICAN AND PACIFIC ISLANDER ELECTION EVE POLL

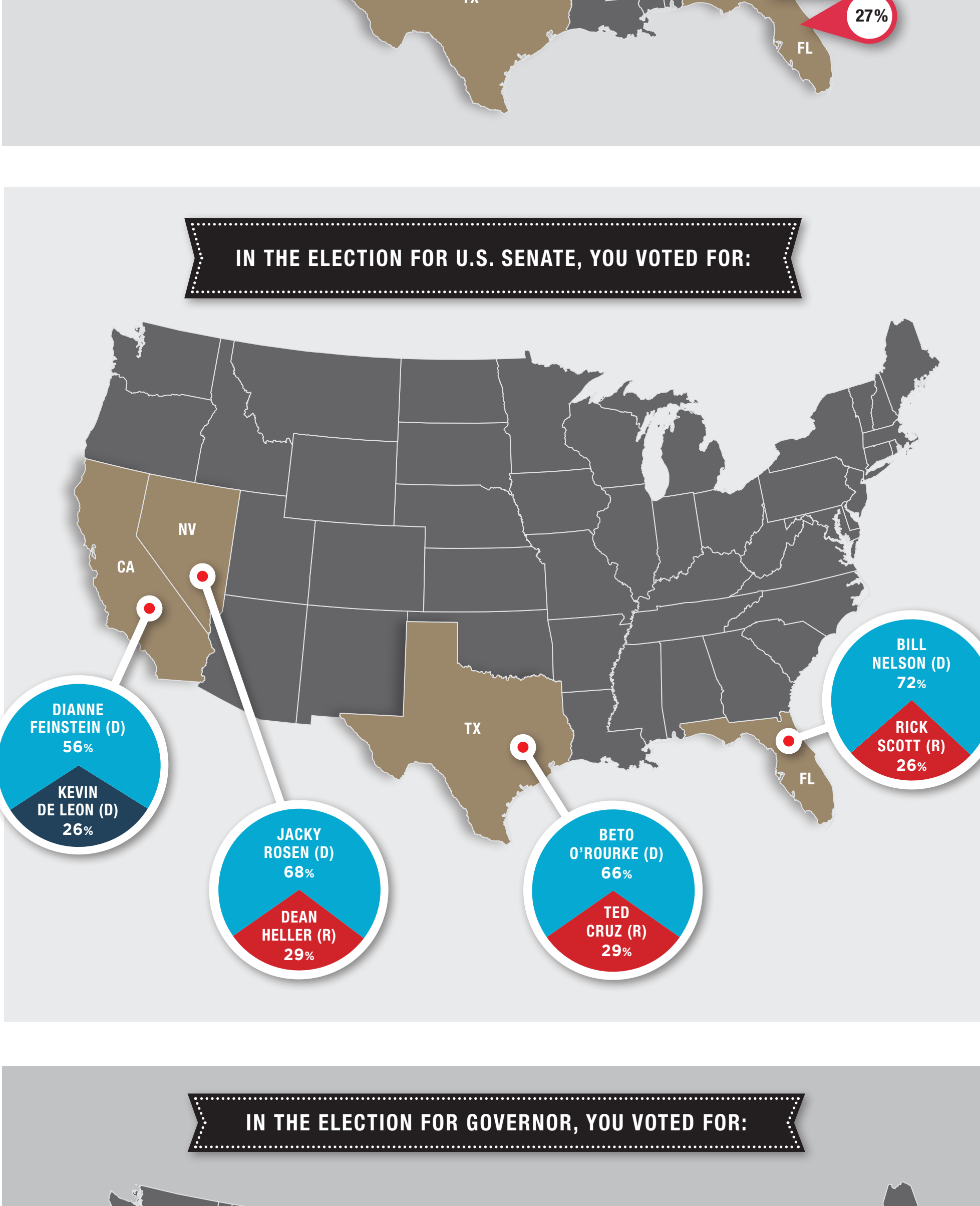
POLL FINDINGS INCLUDE

- Battleground Polling Numbers
- Trump Approval Rating
- Top Issues Facing Asian Americans and Pacific Islanders

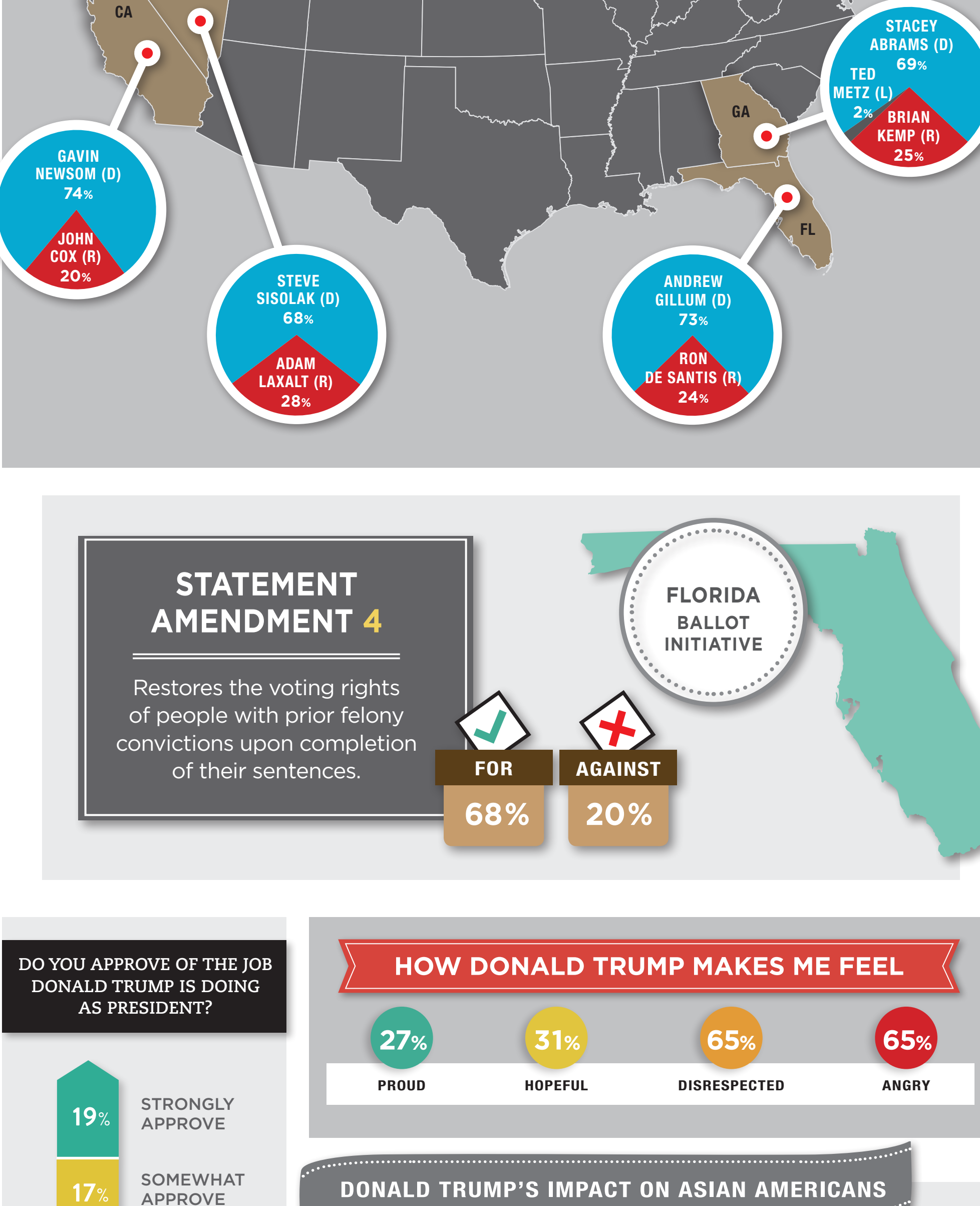
- Voter Outreach and Engagement
- Demographic Breakdown



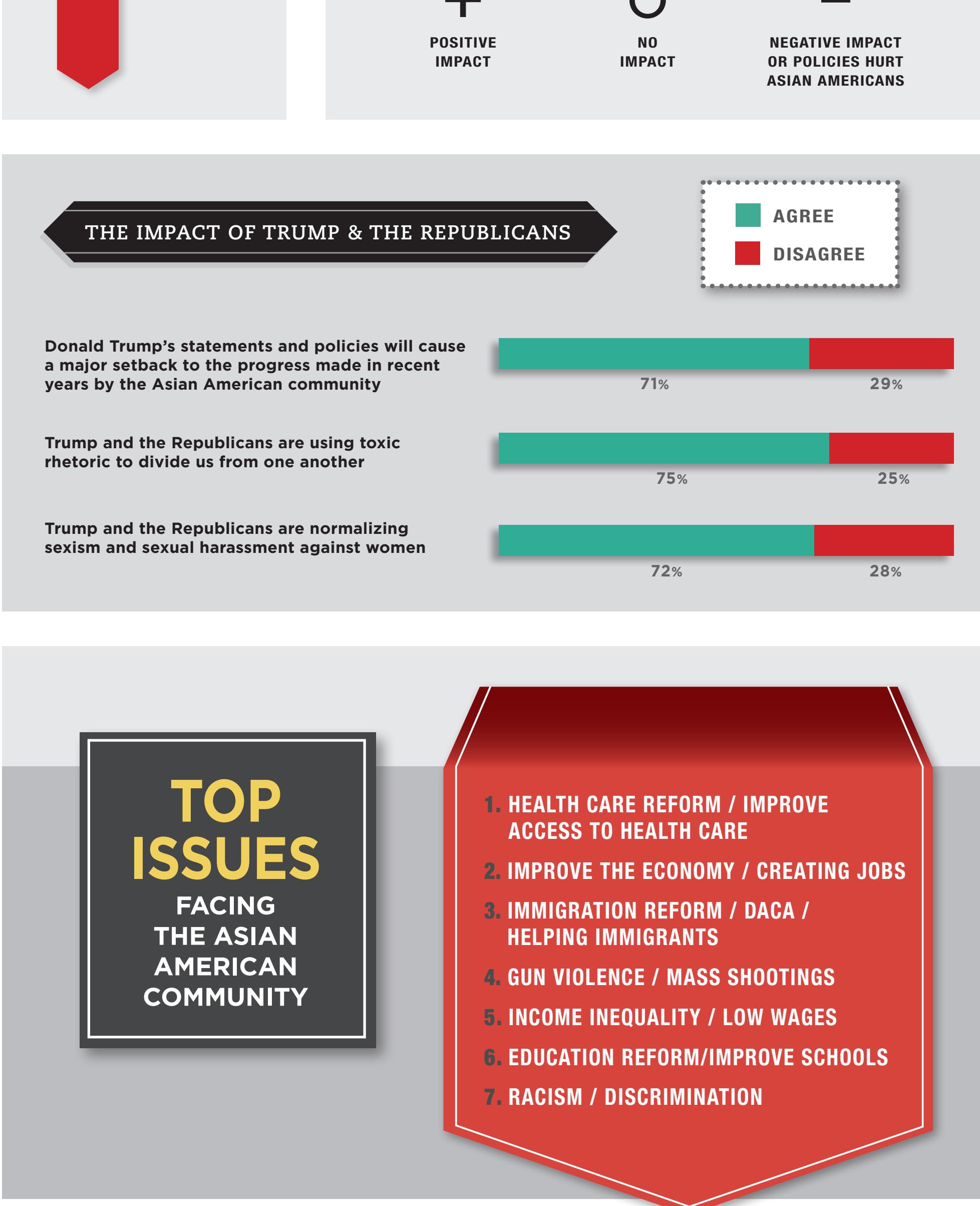
IN THE ELECTION FOR THE U.S. HOUSE OF REPRESENTATIVES, YOU VOTED FOR:



IN THE ELECTION FOR U.S. SENATE, YOU VOTED FOR:

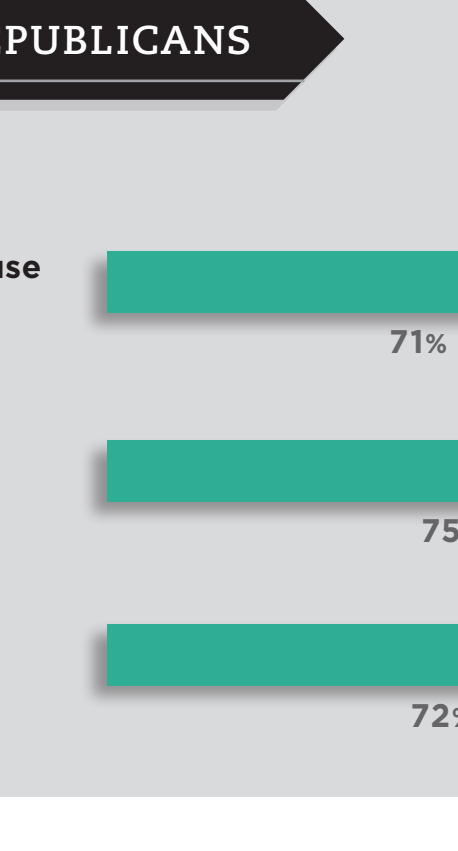


IN THE ELECTION FOR GOVERNOR, YOU VOTED FOR:

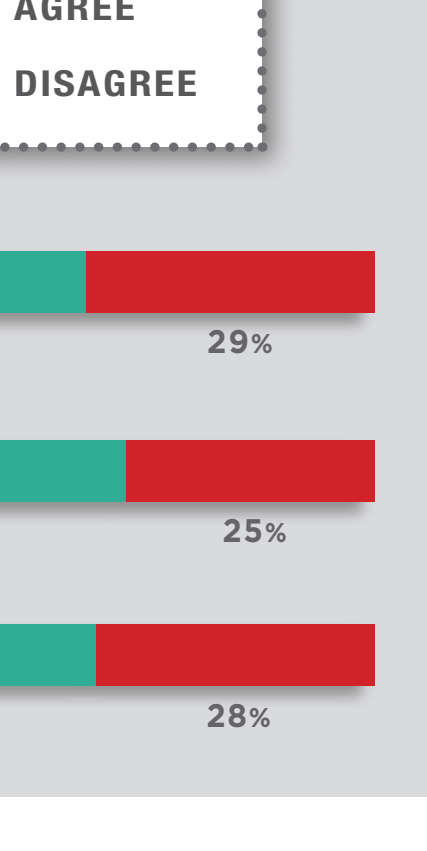


STATEMENT AMENDMENT 4

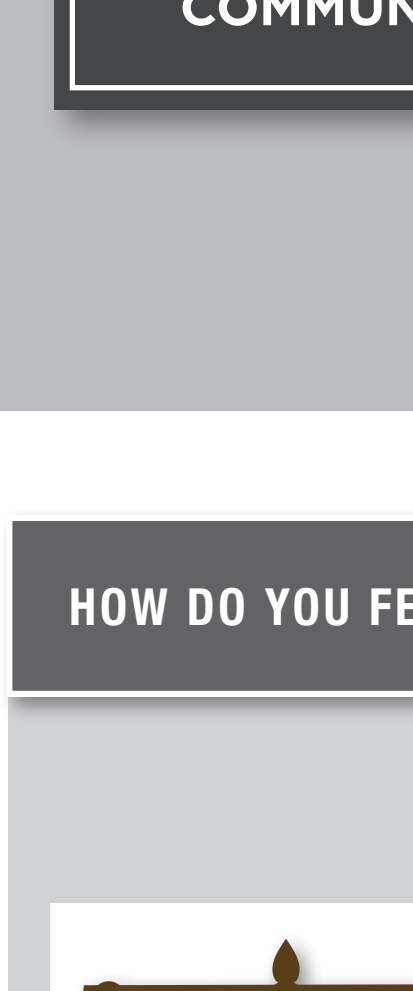
Restores the voting rights of people with prior felony convictions upon completion of their sentences.



FLORIDA BALLOT INITIATIVE



DO YOU APPROVE OF THE JOB DONALD TRUMP IS DOING AS PRESIDENT?



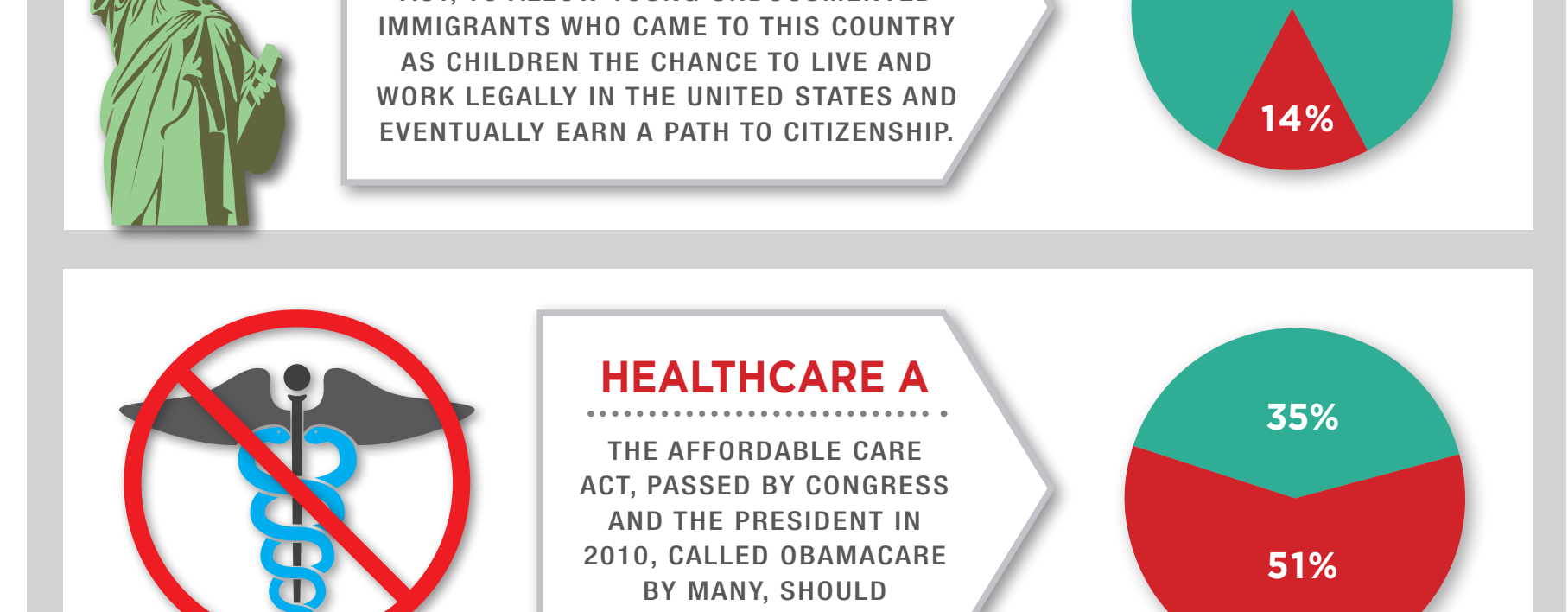
HOW DONALD TRUMP MAKES ME FEEL



DONALD TRUMP'S IMPACT ON ASIAN AMERICANS



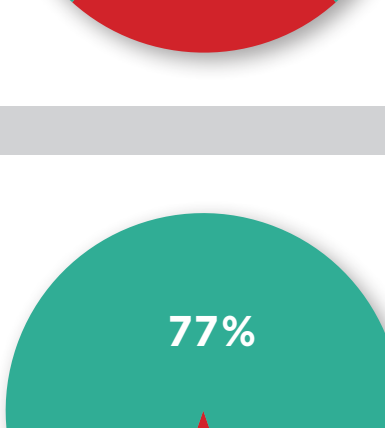
THE IMPACT OF TRUMP & THE REPUBLICANS



TOP ISSUES FACING THE ASIAN AMERICAN COMMUNITY

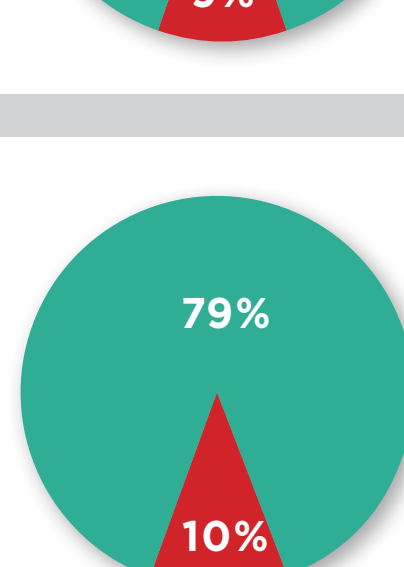
1. HEALTH CARE REFORM / IMPROVE ACCESS TO HEALTH CARE
2. IMPROVE THE ECONOMY / CREATING JOBS
3. IMMIGRATION REFORM / DACA / HELPING IMMIGRANTS
4. GUN VIOLENCE / MASS SHOOTINGS
5. INCOME INEQUALITY / LOW WAGES
6. EDUCATION REFORM/IMPROVE SCHOOLS
7. RACISM / DISCRIMINATION

HOW DO YOU FEEL ABOUT THESE ISSUES?



EQUAL PAY

EMPLOYERS SHOULD BE REQUIRED TO PAY WOMEN AND MEN THE SAME WAGES FOR THE SAME WORK.



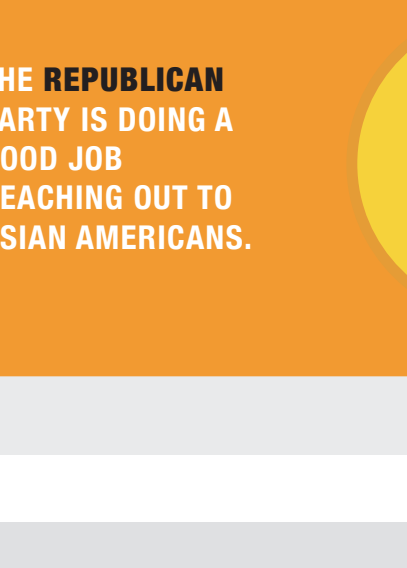
DREAM ACT

CONGRESS SHOULD PASS THE DREAM ACT, TO ALLOW YOUNG UNDOCUMENTED IMMIGRANTS WHO CAME TO THIS COUNTRY AS CHILDREN THE CHANCE TO LIVE AND WORK LEGALLY IN THE UNITED STATES AND EVENTUALLY EARN A PATH TO CITIZENSHIP.



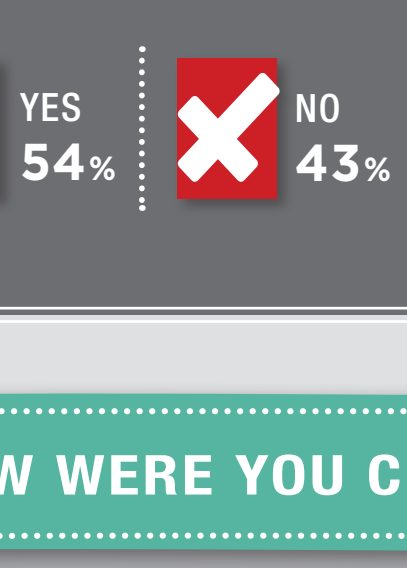
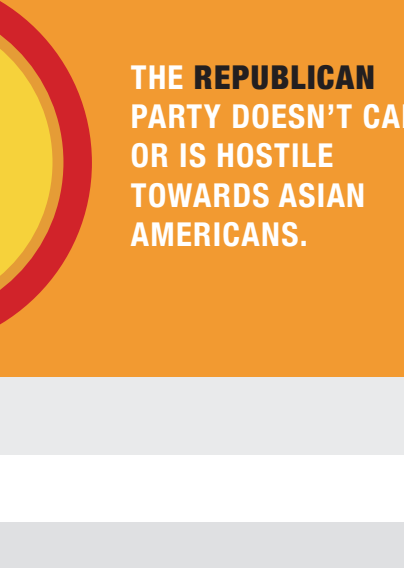
HEALTHCARE A

THE AFFORDABLE CARE ACT, PASSED BY CONGRESS AND THE PRESIDENT IN 2010, CALLED OBAMACARE BY MANY, SHOULD BE REPEALED.



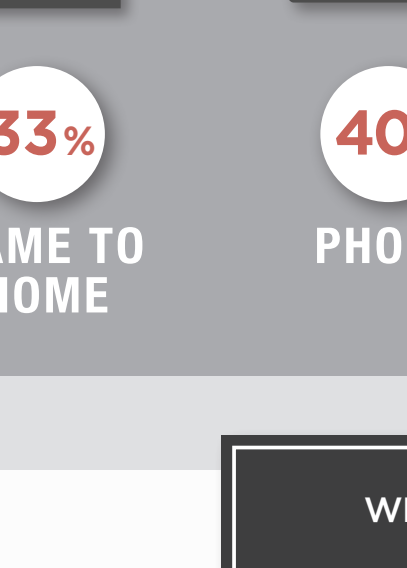
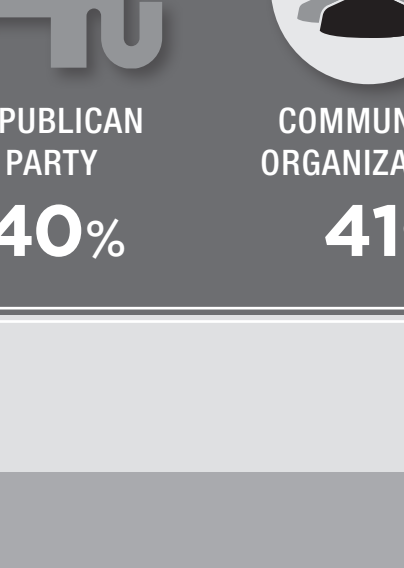
HEALTHCARE B

THE AFFORDABLE CARE ACT, PASSED BY CONGRESS AND THE PRESIDENT IN 2010, CALLED OBAMACARE BY MANY, SHOULD BE STRENGTHENED.



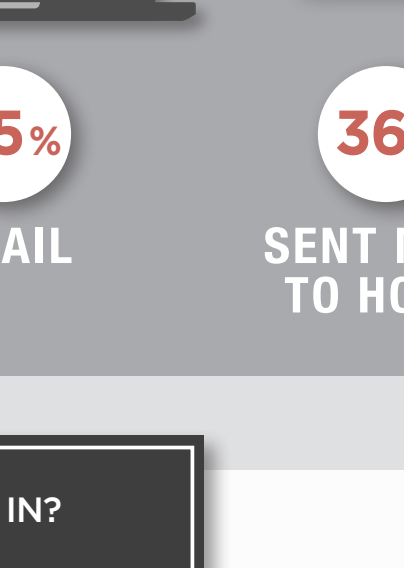
#METOO

SEXUAL HARASSMENT AGAINST WOMEN CONTINUES TO BE A MAJOR PROBLEM IN OUR COUNTRY.



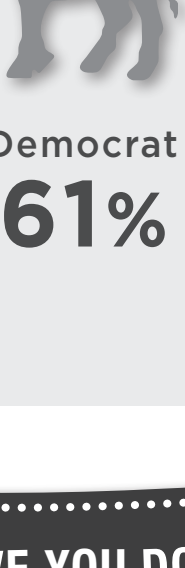
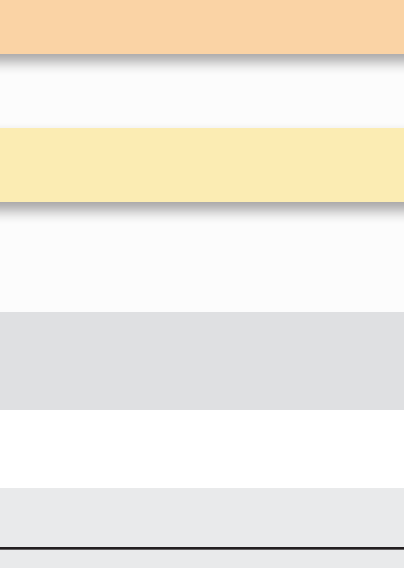
GUN CONTROL

CONGRESS SHOULD ENACT STRICTER GUN LAWS.



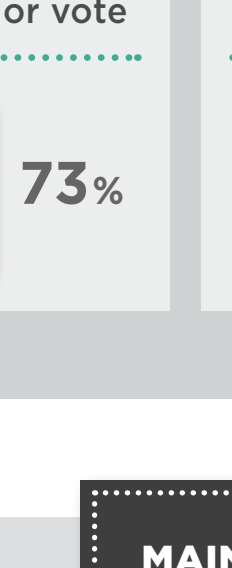
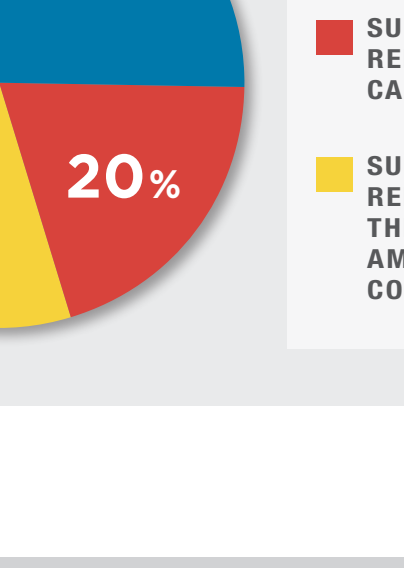
ACCESS TO HIGHER EDUCATION

UNIVERSITIES SHOULD BE ALLOWED TO INCREASE THE NUMBER OF BLACK, LATINO AND OTHER MINORITY STUDENTS STUDYING AT THEIR SCHOOLS BY CONSIDERING RACE ALONG WITH OTHER FACTORS.



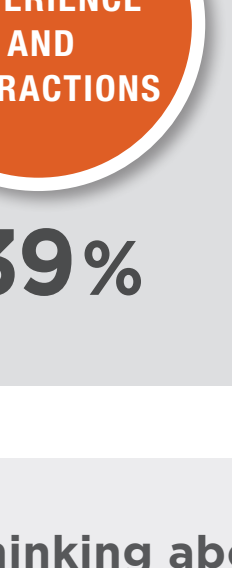
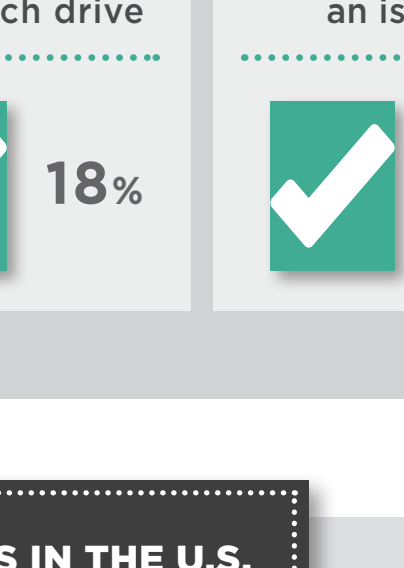
AAPI DIVERSITY AND ACCESS

UNIVERSITIES SHOULD CONSIDER SUBGROUPS OF ASIAN AMERICANS, SUCH AS SOUTHEAST ASIANS OR PACIFIC ISLANDERS, FOR THE PURPOSES OF ADMISSION SO THAT THE BACKGROUND OF UNDERREPRESENTED SUBGROUPS CAN BE CONSIDERED ALONG WITH OTHER FACTORS.



RELIGIOUS PROFILING

THE PRACTICE OF LAW ENFORCEMENT USING OF A PERSON'S RELIGION AS A BASIS FOR CRIMINAL SUSPICION, IS A FORM OF HARASSMENT AND SHOULD NOT BE ALLOWED.



RACIAL PROFILING

THE PRACTICE OF LAW ENFORCEMENT USING OF A PERSON'S RACE, ETHNICITY, OR NATIONAL ORIGIN AS A BASIS FOR CRIMINAL SUSPICION, IS A FORM OF HARASSMENT AND SHOULD NOT BE ALLOWED.

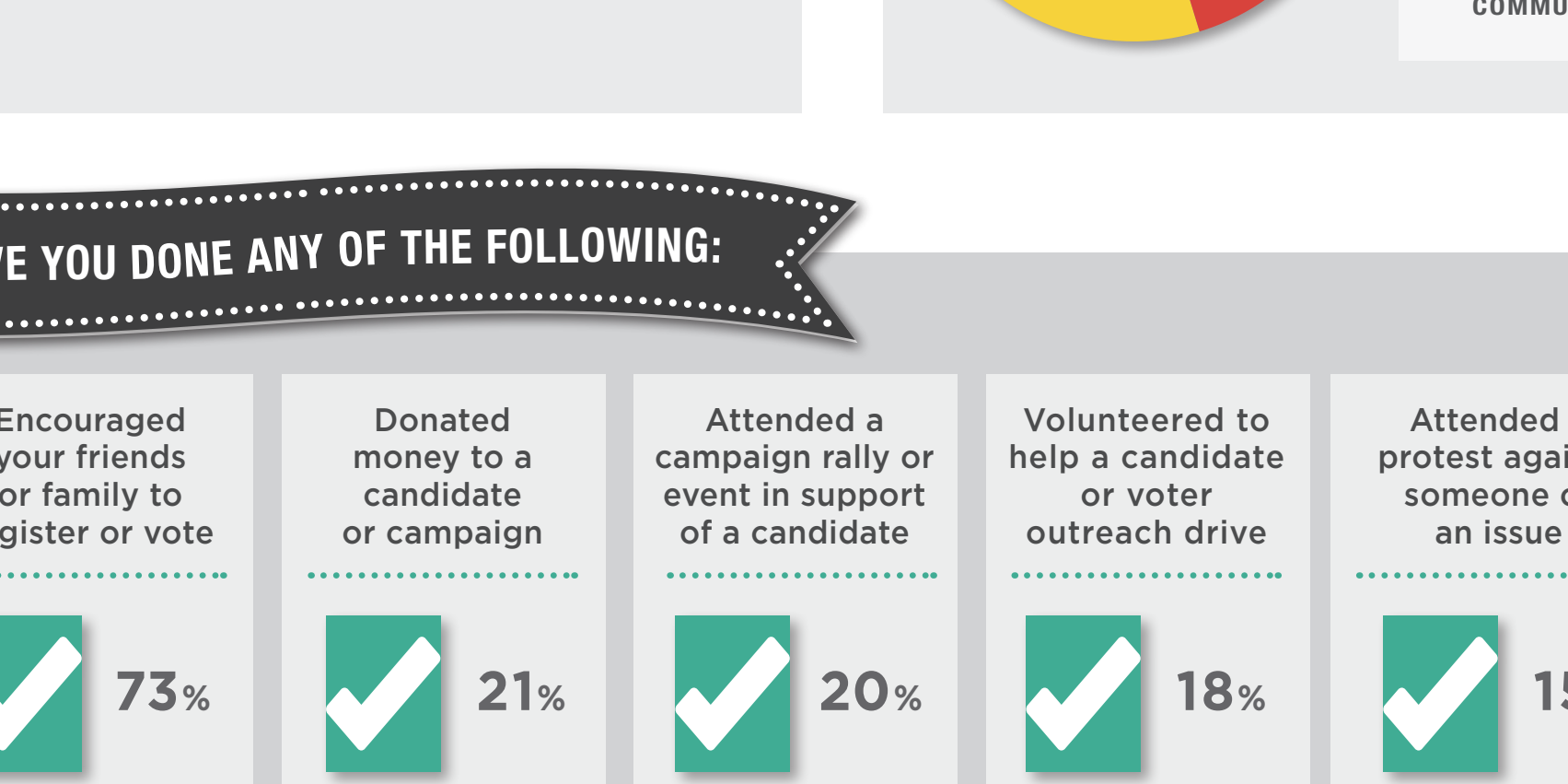
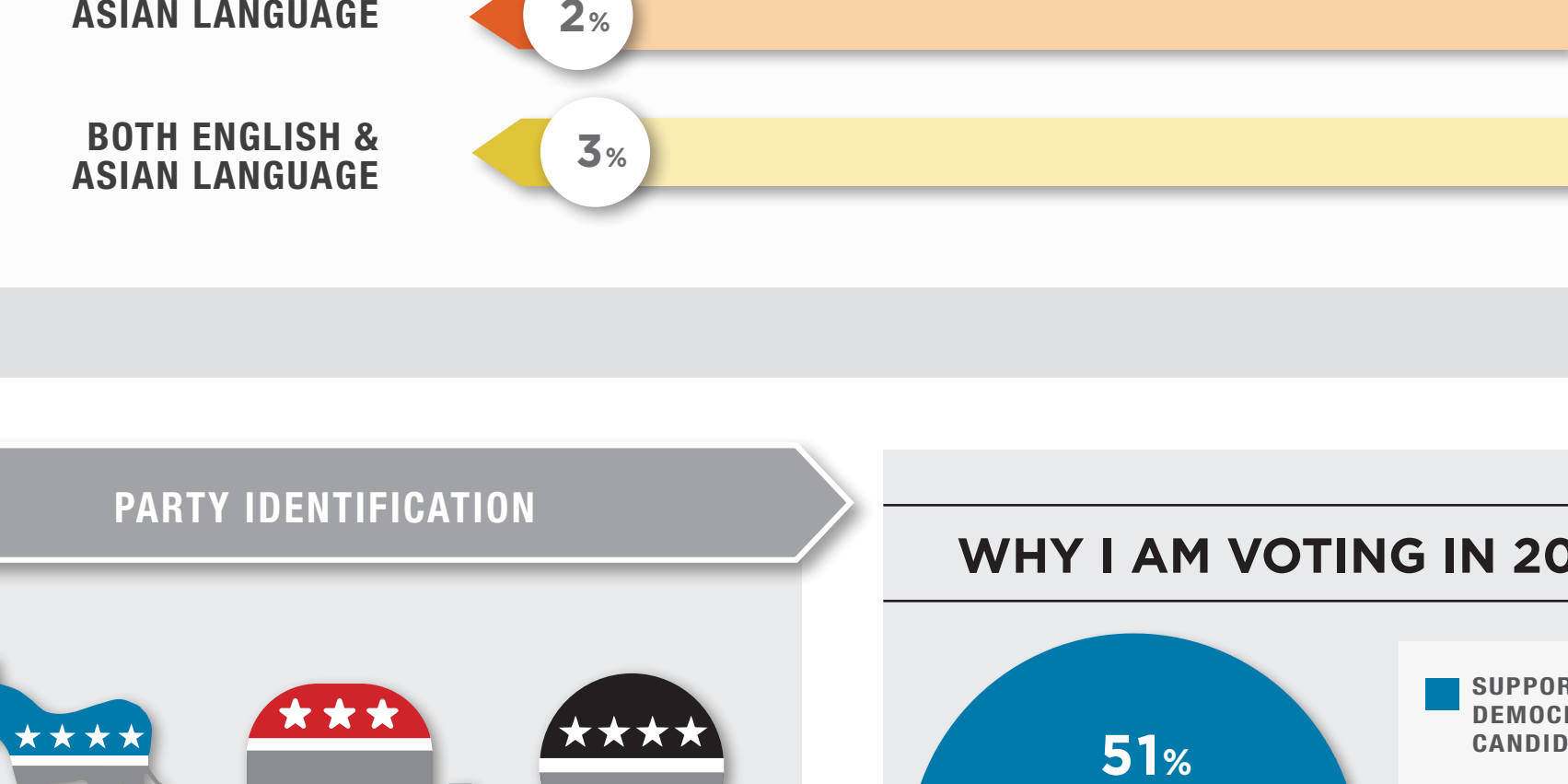


IMMIGRATION

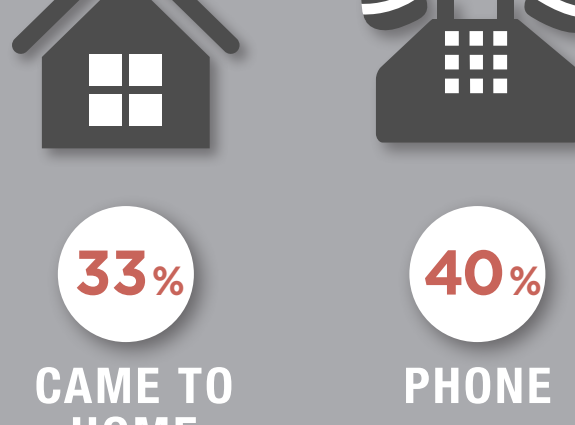
DURING THE 2018 ELECTION CANDIDATES SAID A LOT OF DIFFERENT THINGS ABOUT IMMIGRATION. WHICH STATEMENT ON IMMIGRATION DO YOU AGREE WITH MORE?



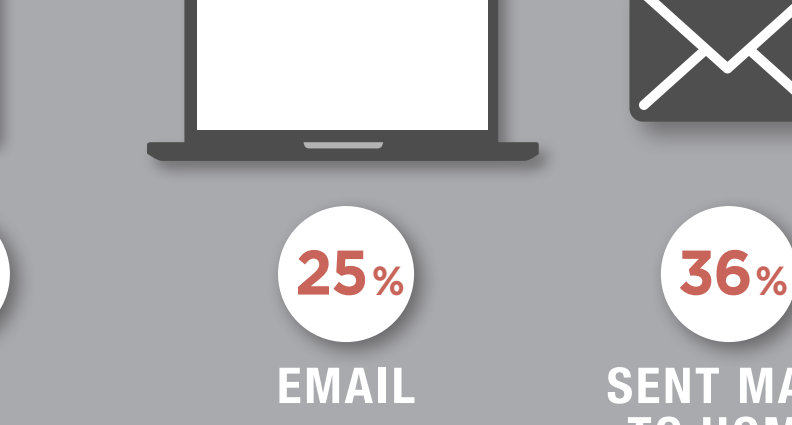
WHICH STATEMENT DO YOU AGREE WITH MOST?



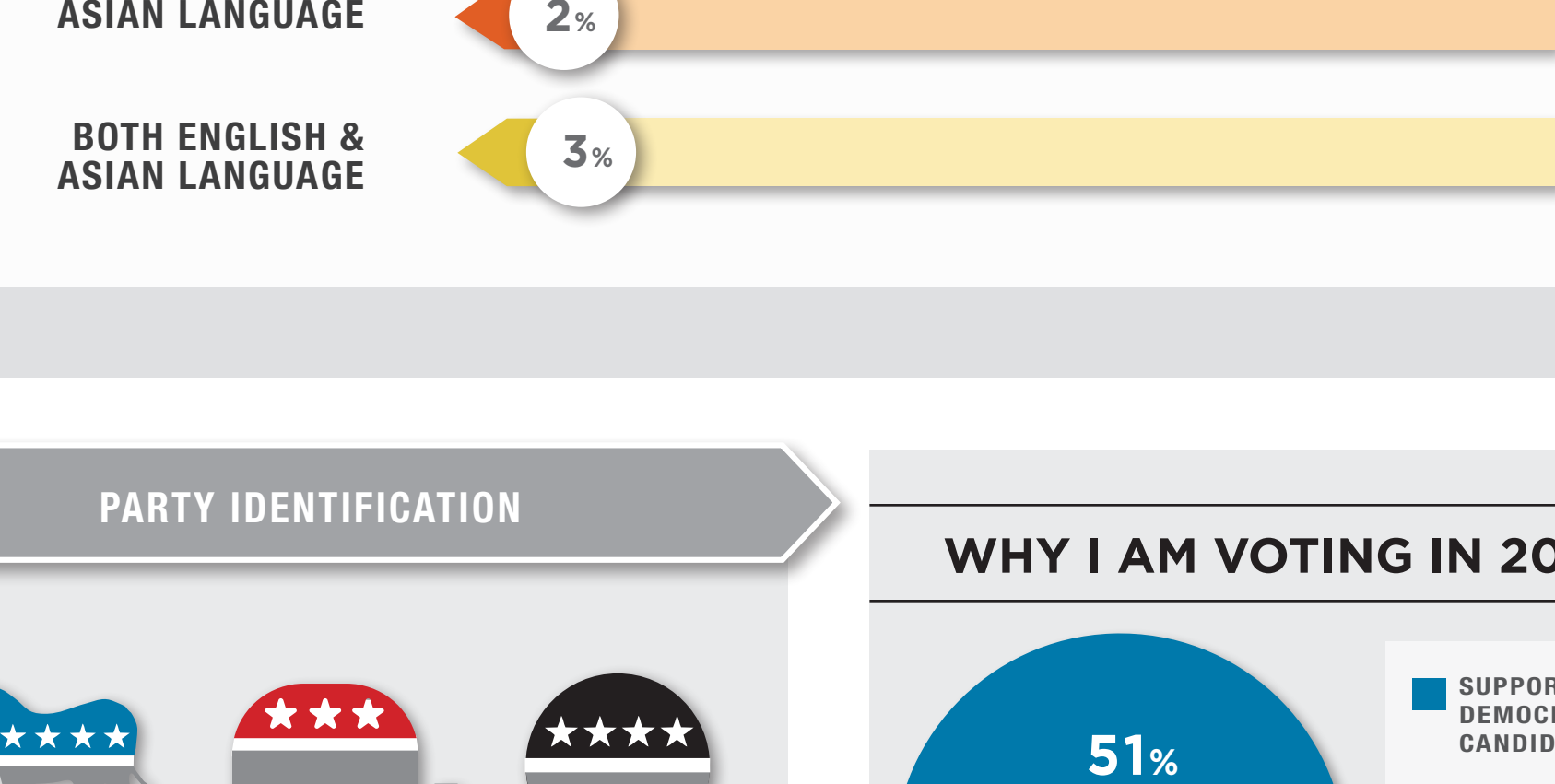
WERE YOU CONTACTED TO VOTE OR REGISTER TO VOTE IN THE LAST FEW MONTHS?



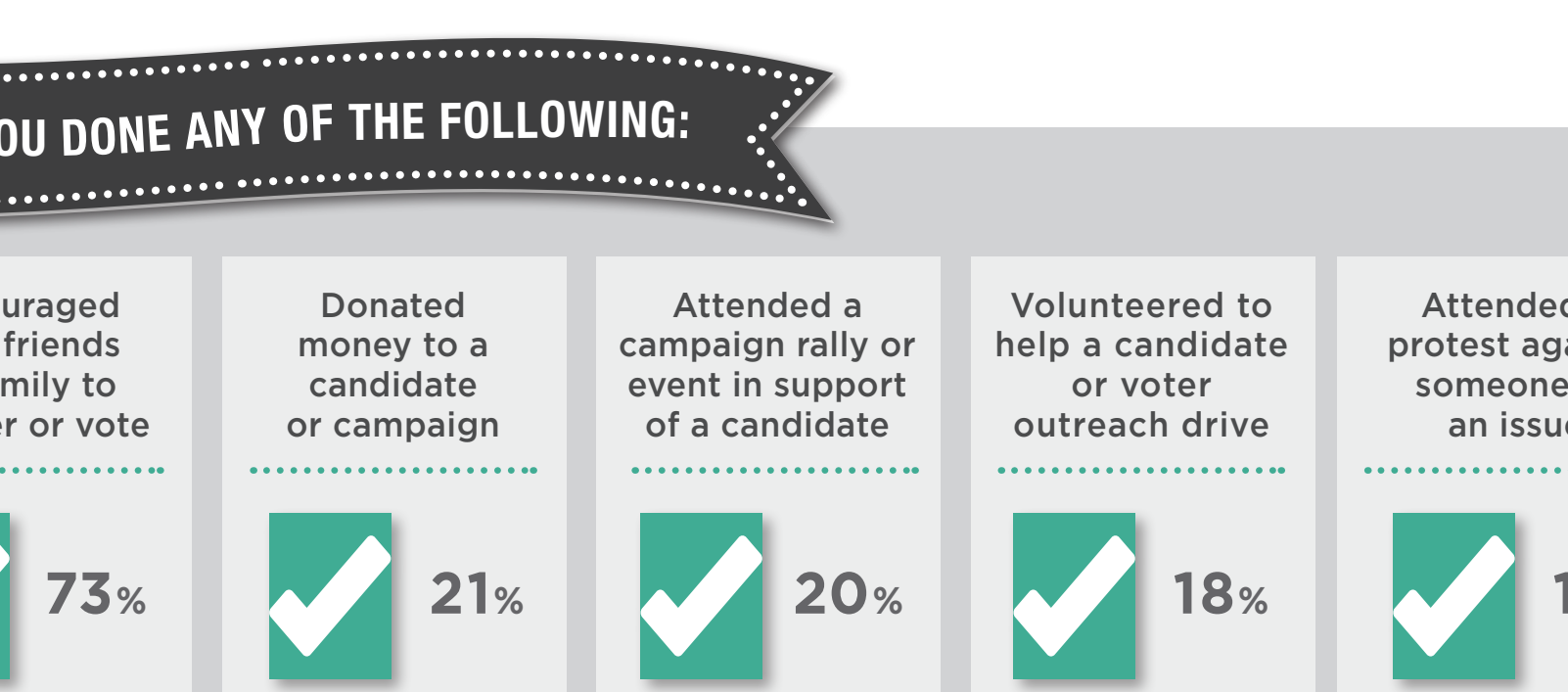
WHO CONTACTED YOU?



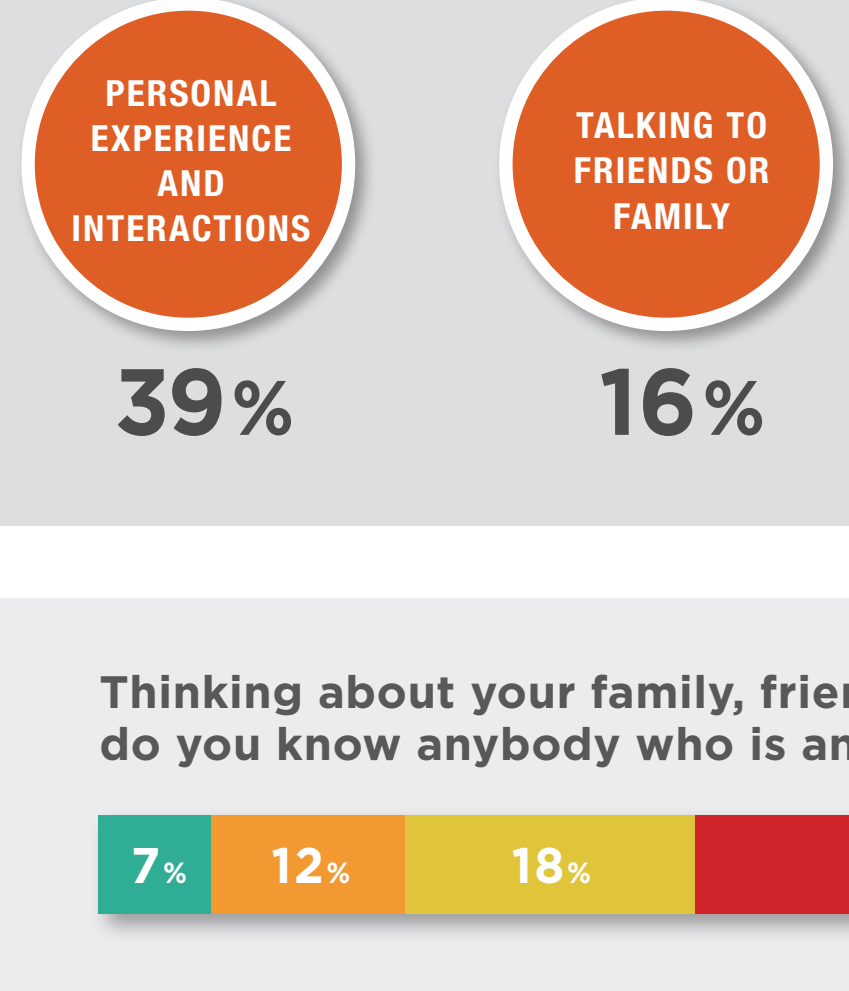
HOW WERE YOU CONTACTED?



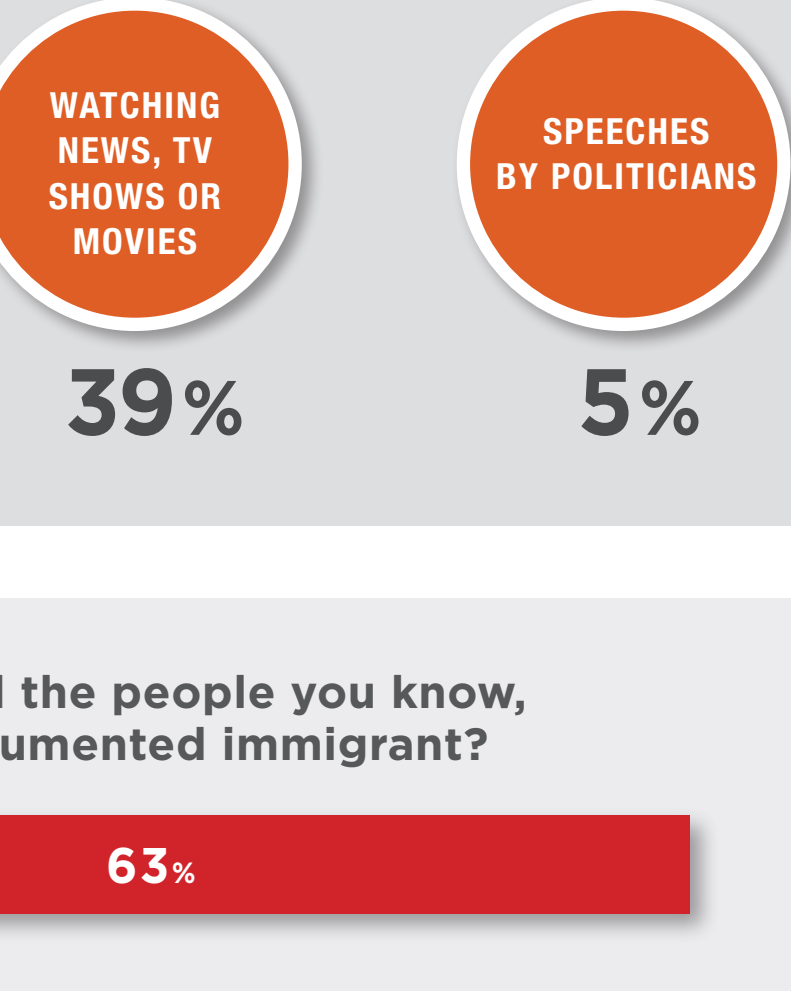
WHAT LANGUAGE WERE YOU CONTACTED IN?



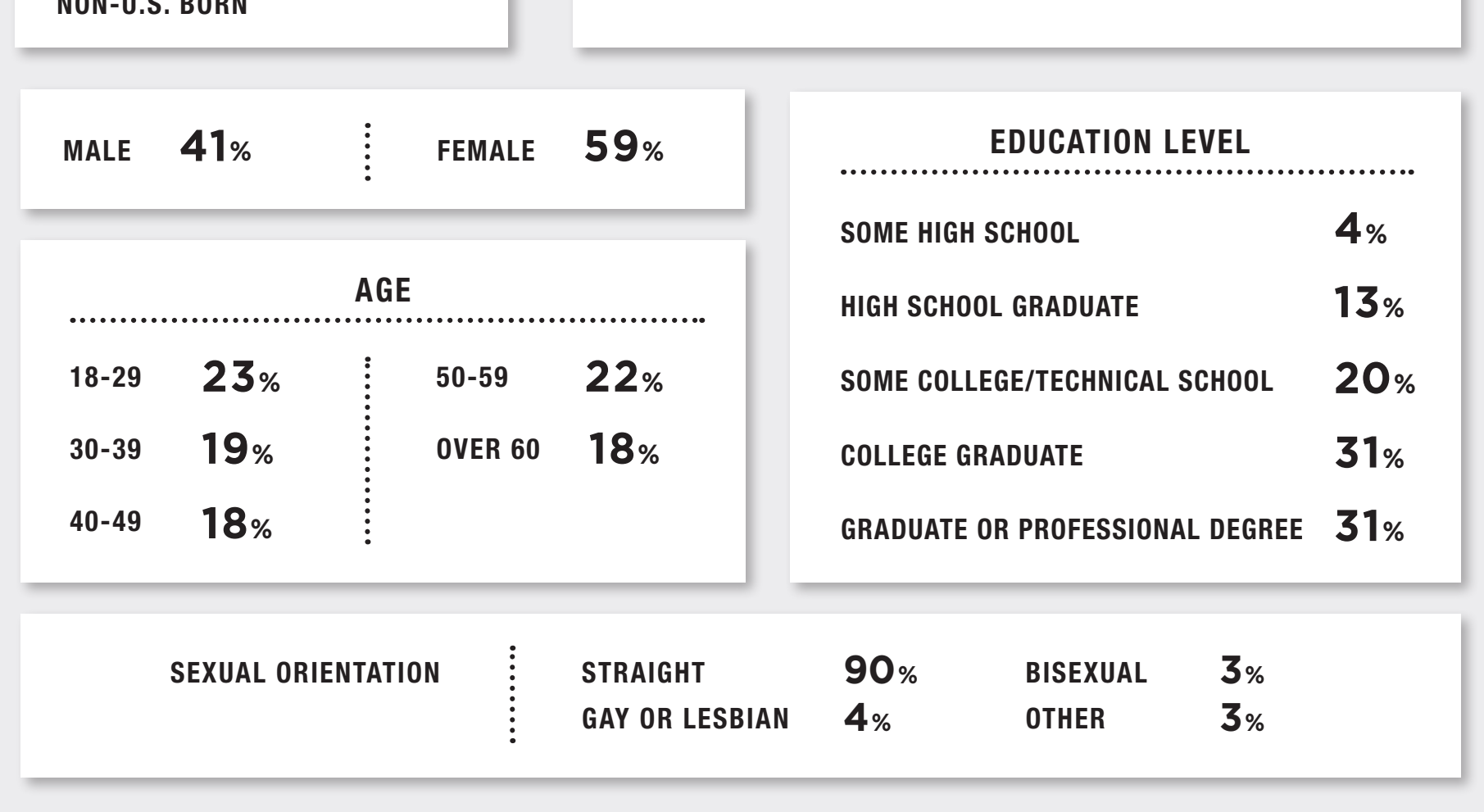
PARTY IDENTIFICATION



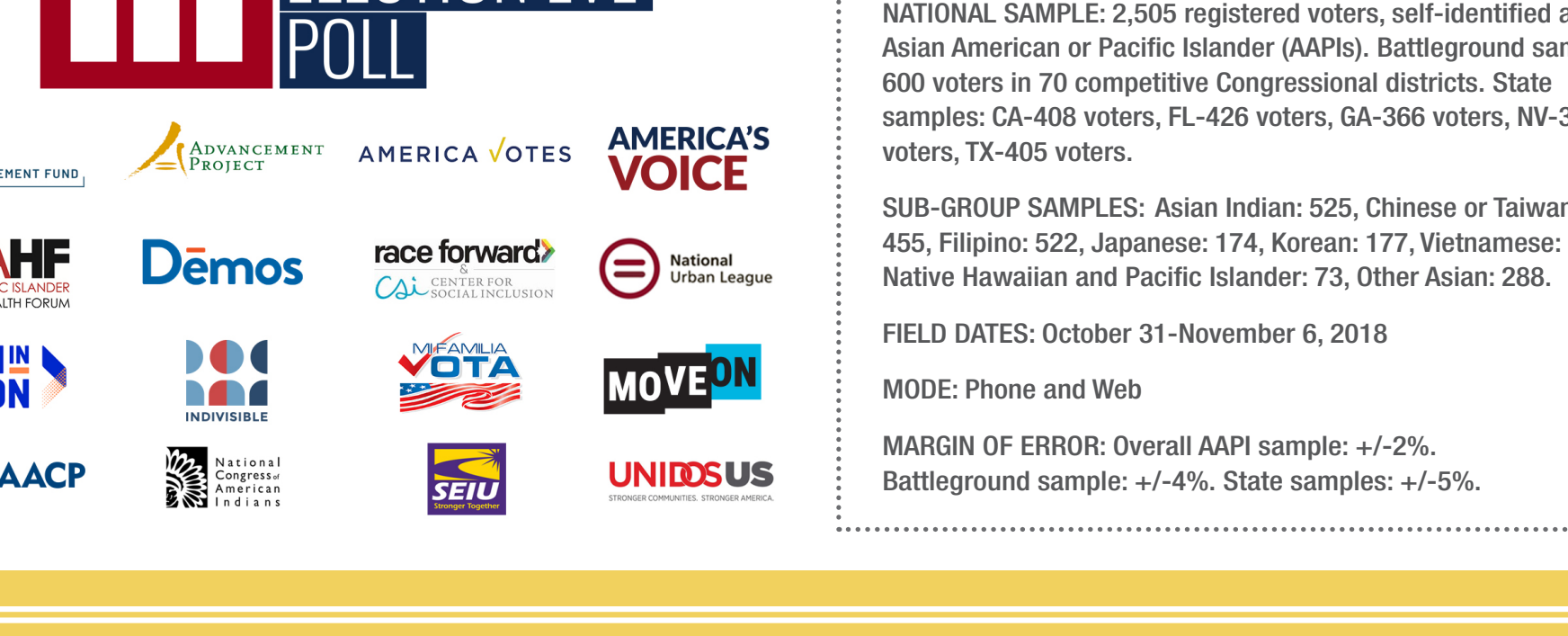
WHY I AM VOTING IN 2018



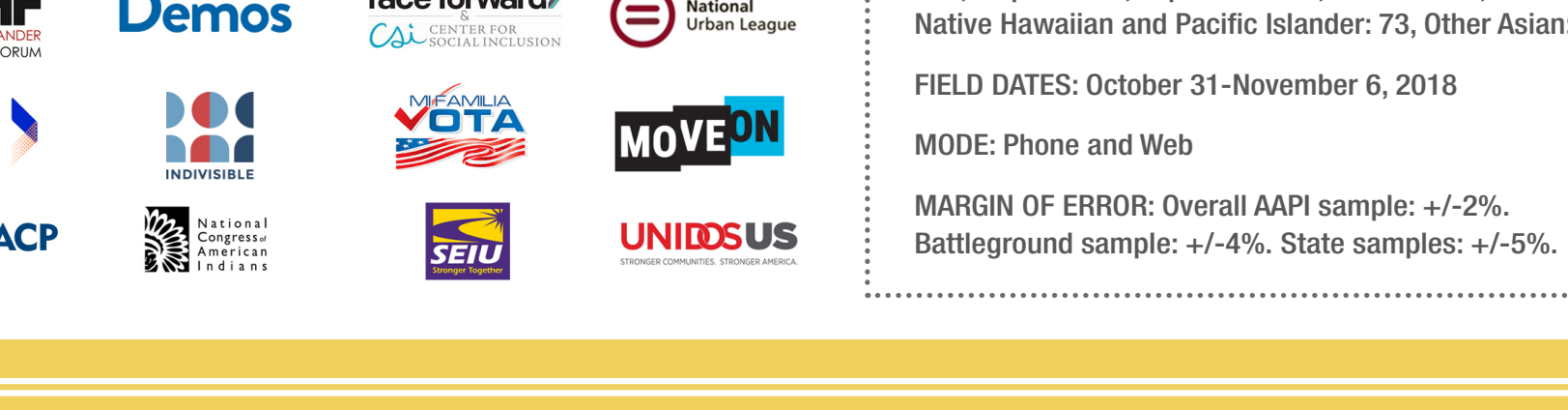
HAVE YOU DONE ANY OF THE FOLLOWING:



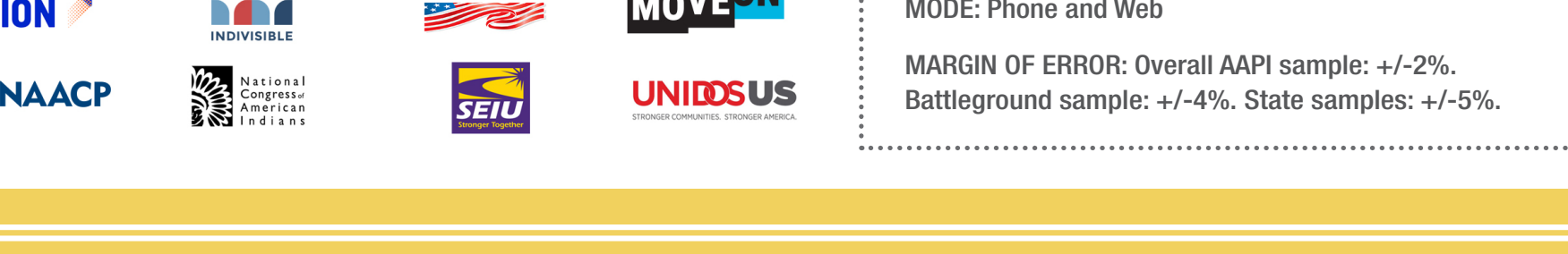
MAIN SOURCE OF LEARNING ABOUT IMMIGRANTS IN THE U.S.



Thinking about your family, friends and the people you know, do you know anybody who is an undocumented immigrant?



VOTER INFORMATION



THE AMERICAN ELECTION EVE POLL

POLL CO-SPONSORED BY: AAPI CIVIC ENGAGEMENT FUND
POLL CONDUCTED BY: ASIAN AMERICAN DECISIONS
NATIONAL SAMPLE: 2,505 registered voters, self-identified as Asian American or Pacific Islander (AAPIs). Battleground sample: 600 voters in 70 competitive Congressional districts. State samples: CA-408 voters, FL-426 voters, GA-366 voters, NV-300 voters, TX-405 voters.
SUB-GROUP SAMPLES: Asian Indian: 525, Chinese or Taiwanese: 455, Filipino: 522, Japanese: 174, Korean: 177, Vietnamese: 291, Native Hawaiian and Pacific Islander: 73, Other Asian: 288.
FIELD DATES: October 31-November 6, 2018
MODE: Phone and Web
MARGIN OF ERROR: Overall AAPI sample: +/-2%, Battleground sample: +/-4%, State samples: +/-5%.